



SPREESPEICHER
EVENT GMBH

SPREESPEICHER

HERZLICH WILLKOMMEN IM
RAUM ULTIMO

VENUE PRESENTATION

ROOM ULTIMO



ROOM ULTIMO

Air-conditioned meeting rooms from 10 persons



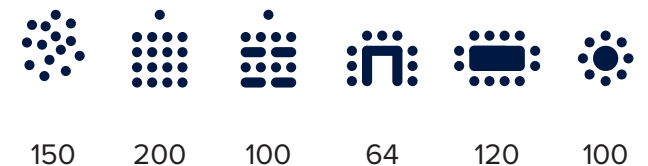
The meeting rooms at the Spreespeicher are diverse and adapt individually to each event. The combination of modern technology and flexible interior design elements through movable partitions offer creative freedom for the implementation of your meetings, workshops, seminars and conferences.

The beautiful riverside terrace invites you to a refreshing reception, productive networking or creative breaks during an efficient meeting day. No matter if you need an event location for meetings, workshops or company events, our room Ultimo adjusts perfectly to your individual ideas.

INCLUSIVE

- ✓ Movable partitions
- ✓ Banquet and meeting furnishing
- ✓ High tables with white covers
- ✓ Beamers & screens
- ✓ Ethernet & WIFI (-Hotspot)
- ✓ Exclusive Spree terrace
- ✓ Outdoor lounge furnishing
- ✓ Professional light and sound system
- ✓ High voltage current in- & outdoor
- ✓ Parking spaces in front of the building

ROOM CAPACITIES



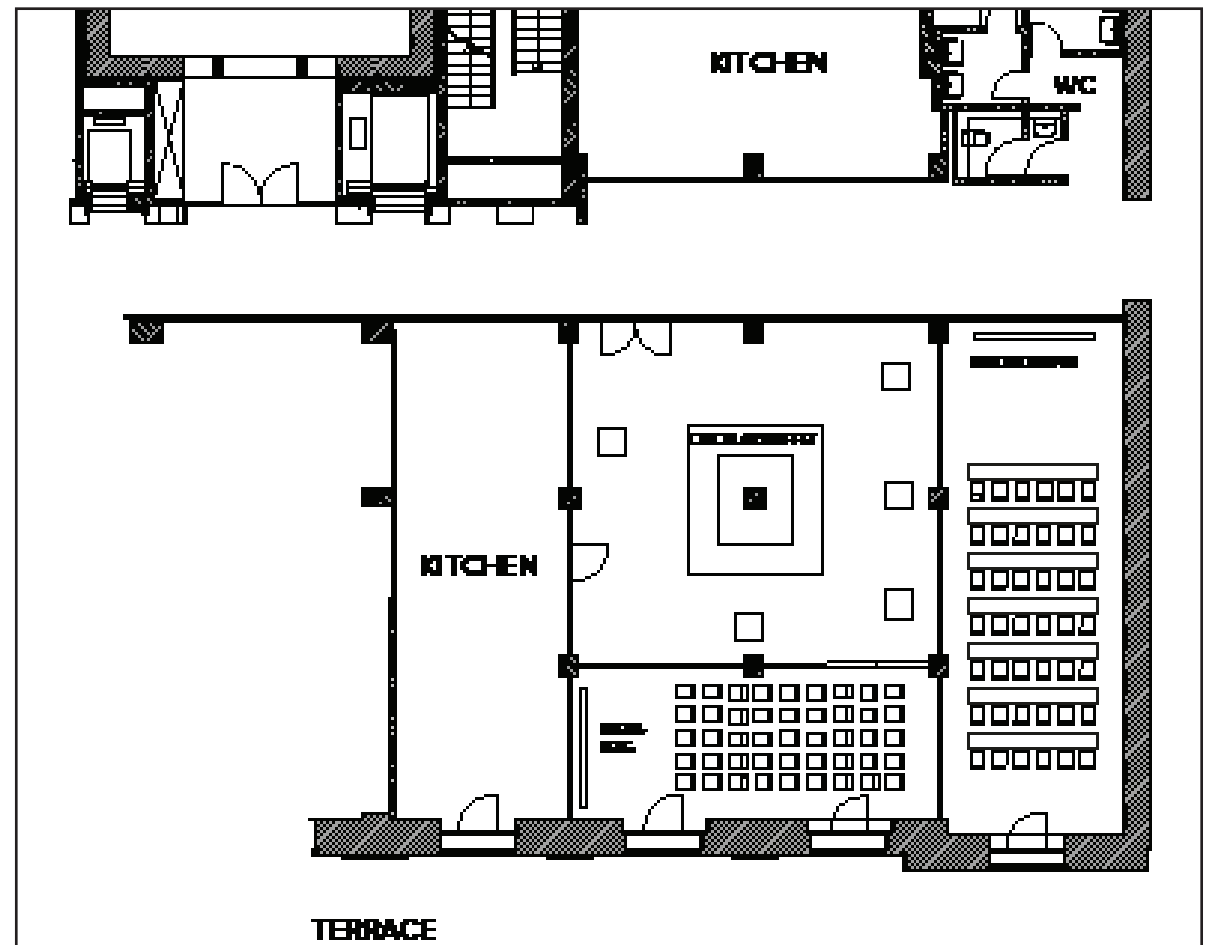
IMPRESSIONS **INDOOR**



IMPRESSIONS OUTDOOR

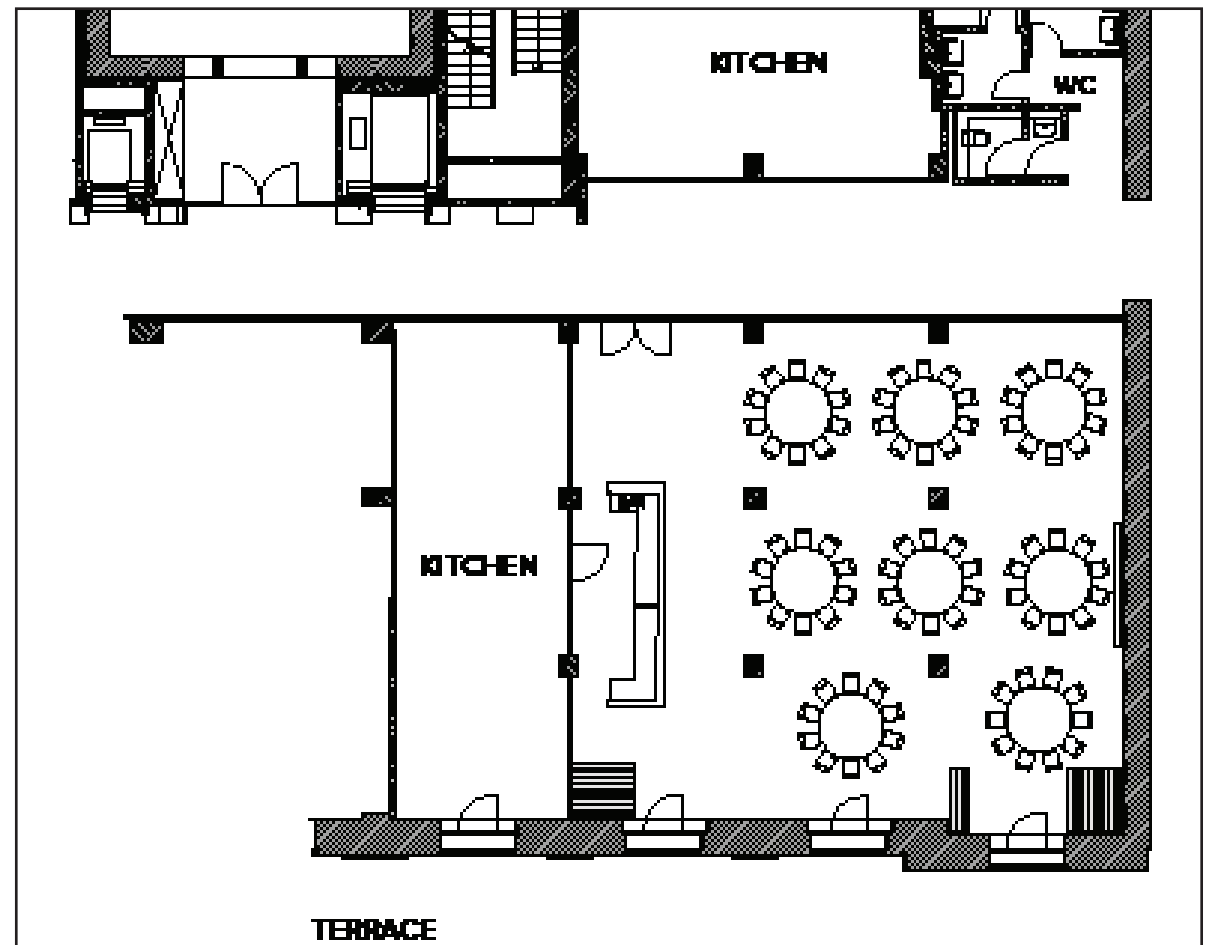


MEETING ROOMS **FRIEDRICHSHAIN & KREUZBERG**



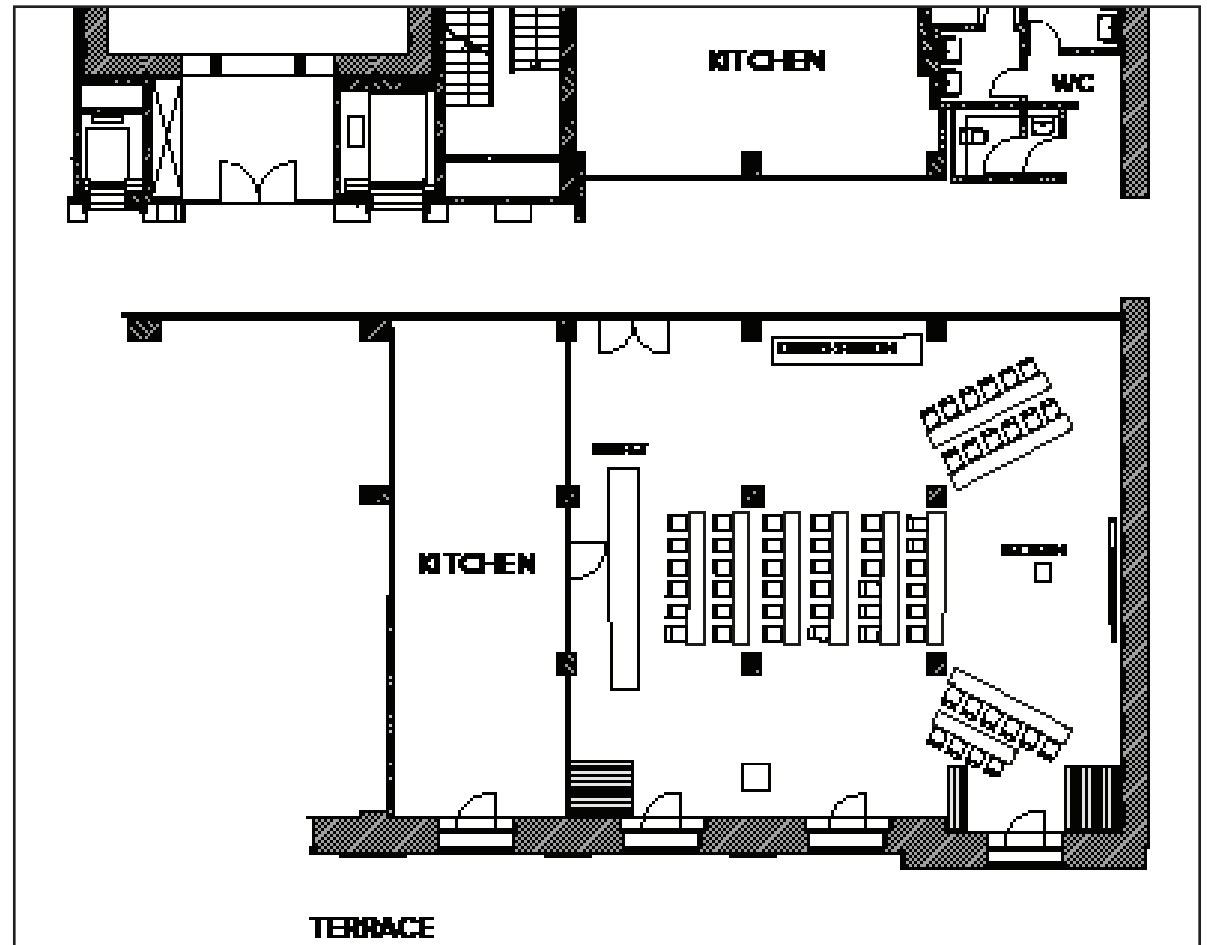
THIS IS WHAT YOUR EVENT COULD LOOK LIKE WITH **MOBILE PARTITIONS**

GALA SET UP



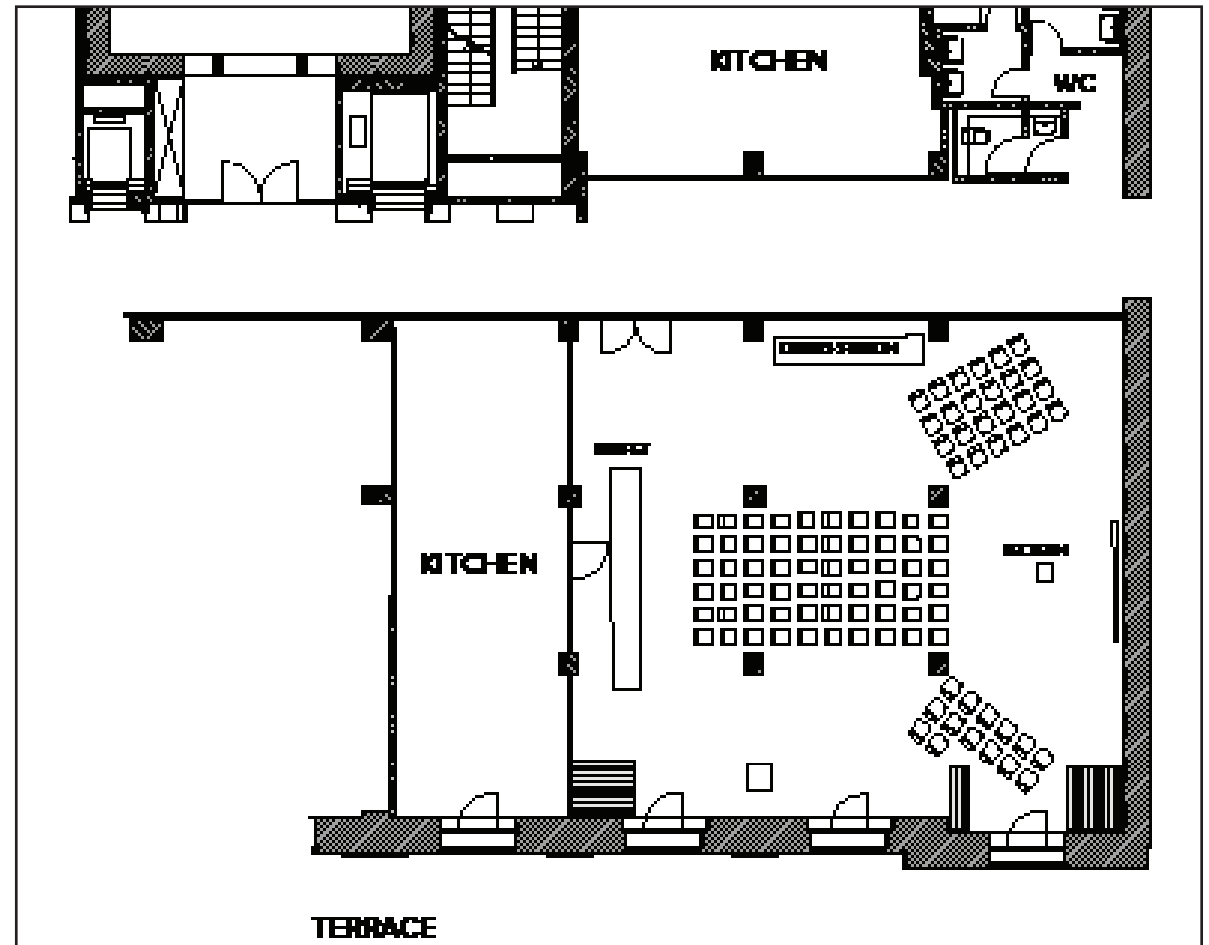
THIS IS WHAT YOUR EVENT COULD LOOK LIKE WITH **80 GUESTS**

MEETING SET UP



THIS IS WHAT YOUR EVENT COULD LOOK LIKE WITH **60 GUESTS**

CONFERENCE SET UP



THIS IS WHAT YOUR EVENT COULD LOOK LIKE WITH **100 GUESTS**

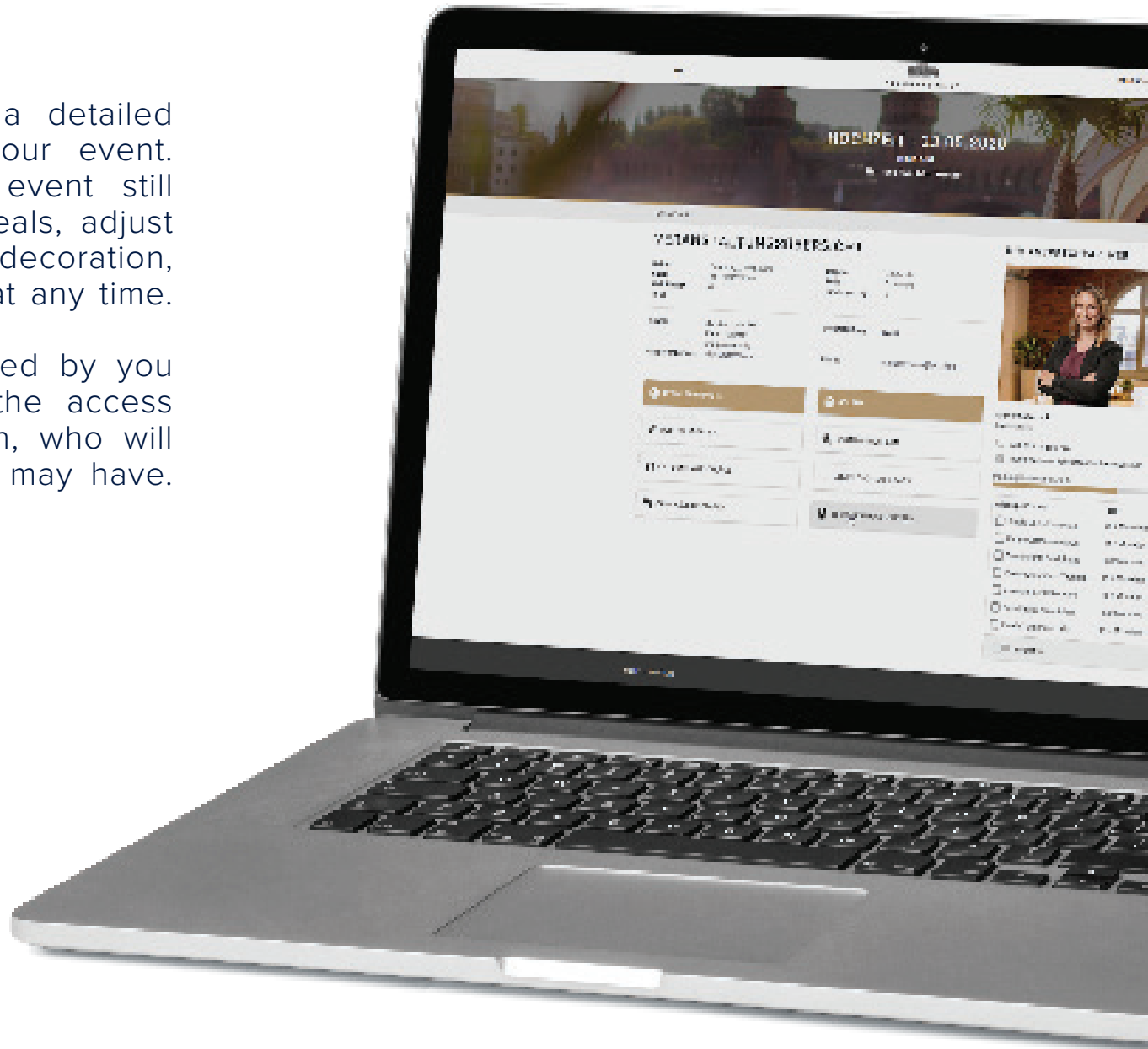
TIME TO GO INTO DETAIL

Do you already know the digital event planner?

The Digital Event Planner gives you a detailed overview of the planning status of your event. You can see which details of your event still need to be planned, you can select meals, adjust seating plans and look at the relevant decoration, entertainment and technical catalogues at any time.

All changes can be viewed and adjusted by you and your consultant. You can obtain the access data from your personal contact person, who will be happy to answer any questions you may have.

Go have a look!



CONTACT

We're delighted to create an individual and tailored proposal that will meet our expectations. Don't hesitate to contact our event managers at any time.

PUBLIC TRANSPORT

All public transportation is within a radius of only 500 meters. At the S + U station „Warschauer Straße“ you can catch the train, the underground and the tram line M10.

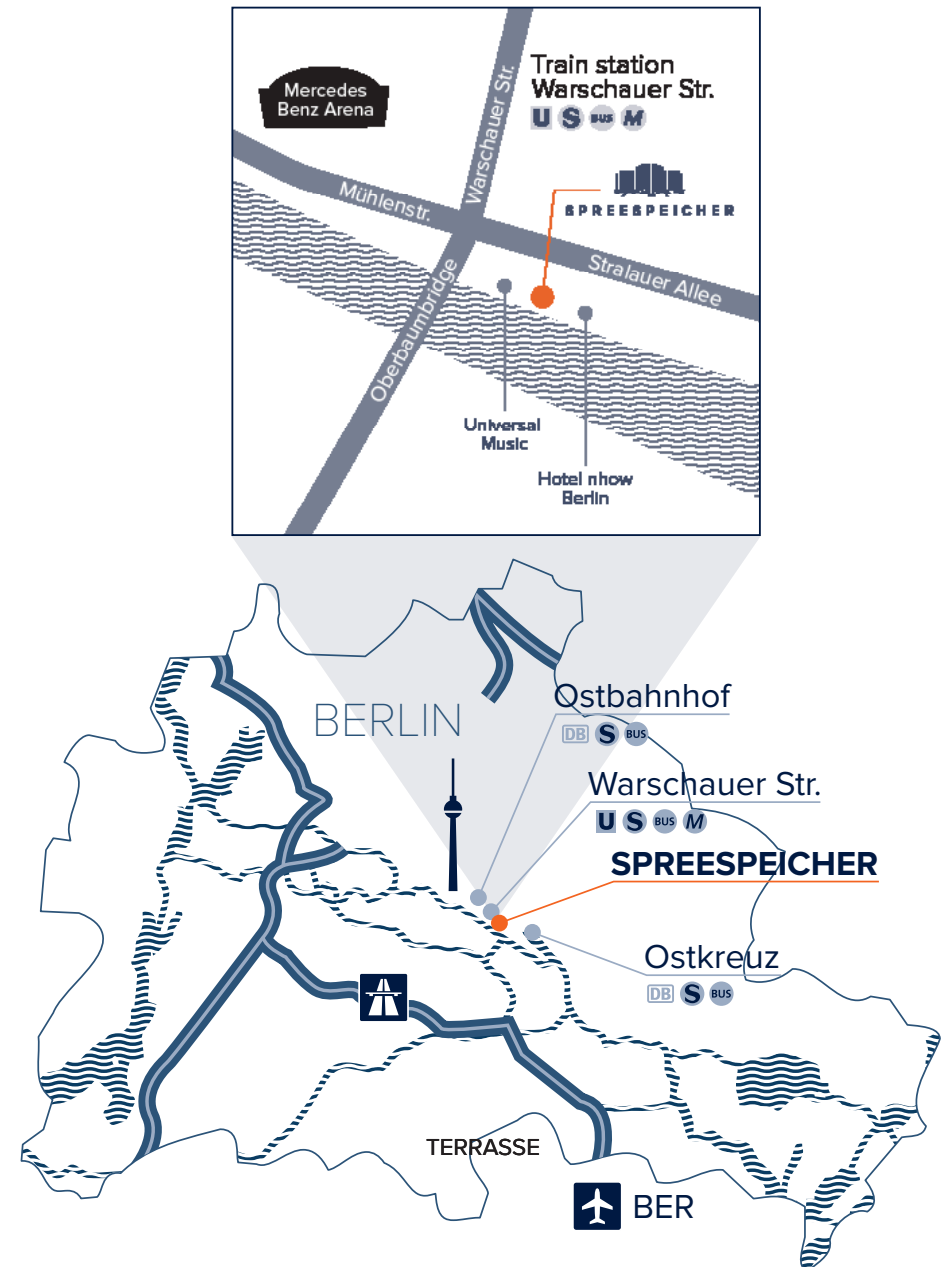
The bus stop „Oberbaumbrücke“ is located directly on the corner of Stralauer Allee /Warschauer Straße.

SPREESPEICHER EVENT GMBH

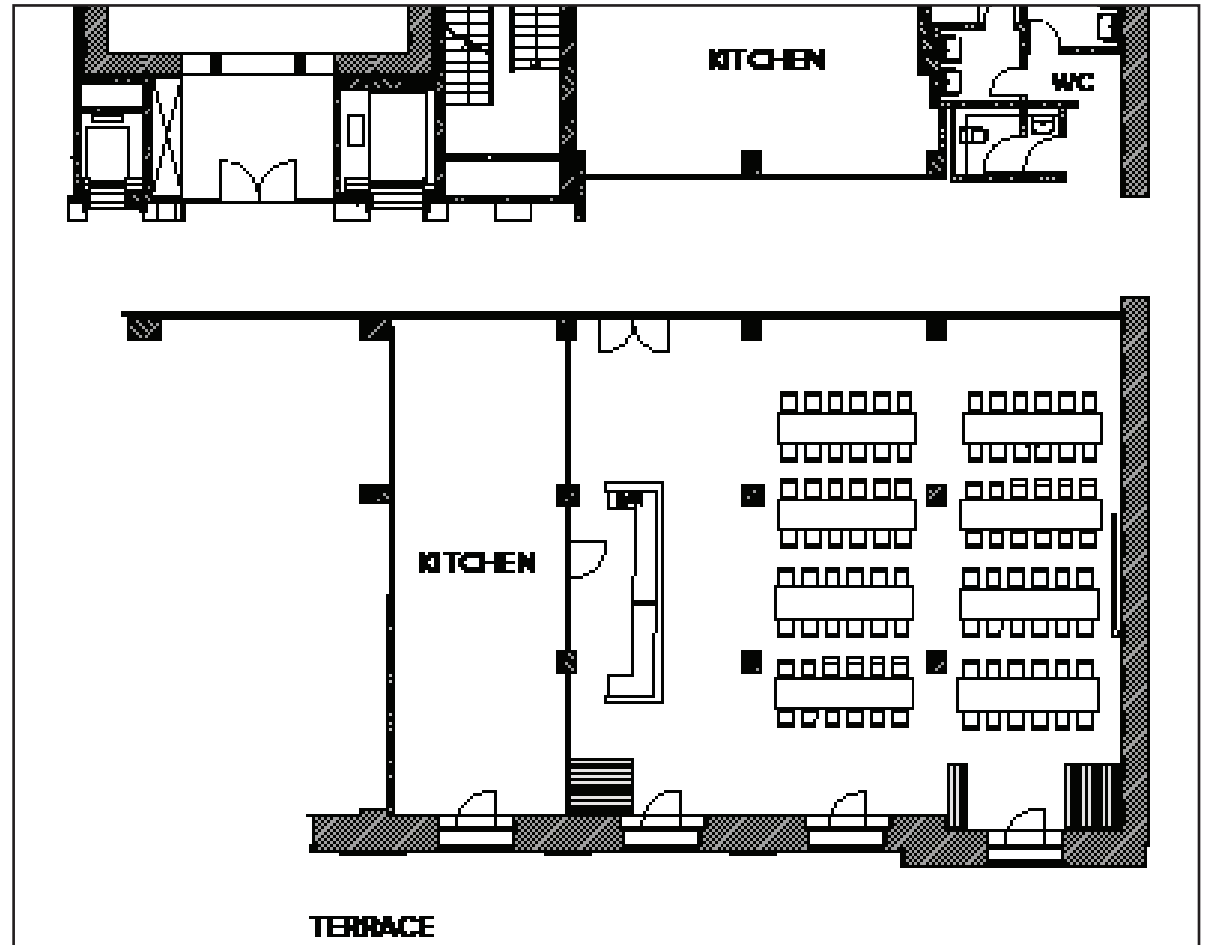
Tel. +49 30 814 590 700

anfrage@spreespeicher-events.de

www.spreespeicher-events.de

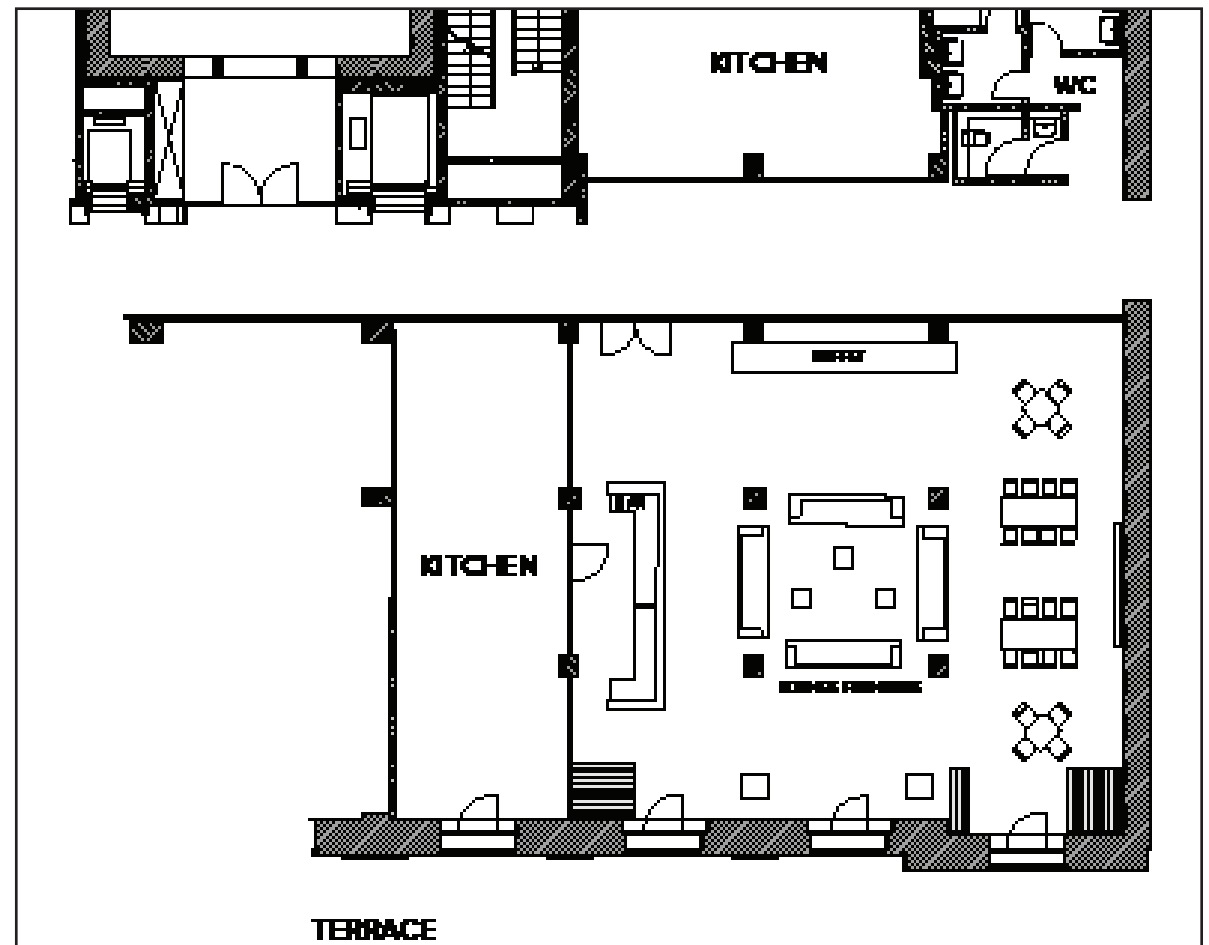


BANQUET SET UP



THIS IS WHAT YOUR EVENT COULD LOOK LIKE WITH **100 GUESTS**

LOUNGE SET UP



THIS IS WHAT YOUR EVENT COULD LOOK LIKE WITH **60 GUESTS**